



FACT SHEET 2019

LOCATION

White Pearl Resorts, Ponta Mamoli is situated on the south east coast of Mozambique. With its sublime ocean frontage of more than 2km, tranquil beach and surrounded by tracts of indigenous bush, discover a place so exhilarating, a welcome so warm and an experience so pure, it promises to be unlike any other in all of Mozambique.

Warmed by the Indian Ocean current moving south from the equator, the country's clear waters and subtropical climate provides travellers with an enticing beachside escape. White Pearl Resorts is surrounded by natural beauty, from the Indian Ocean to the east, to the Maputo Special Reserve to the west. It is nestled in a cool, sheltered bay on Mozambique's Lagoon Coast about 80km south of the country's stately capital city, Maputo, and 25km north of the Kosi Bay/South Africa border.

GPS COORDINATES: S 26° 42' 30.78" E 32° 54' 03"

GETTING THERE

ROAD TRANSFER – KOSI BAY BORDER TO WHITE PEARL RESORTS

Road transfers are available from Kosi Bay Border to White Pearl Resorts. The journey from Kosi Bay Border to the resort takes approximately 30 minutes. Set your eyes upon Mozambican culture and beautiful landscape.

Preferable departure times from Kosi Bay border are: 10h00 or 15h00. Luggage allowance of 20kg (soft bag) per person for the Kosi Bay road transfer.

Secure parking at the Kosi Bay border is estimated at \$6.00 per day and is on a cash-only basis.

ROAD TRANSFER – MAPUTO TO WHITE PEARL RESORTS

Road transfers are available from Maputo to White Pearl Resorts. The journey from Maputo to the resort takes approximately 90 minutes. Guests using this transfer option can meet our representative at our White Pearl Airport kiosk at Maputo International Airport.

Scheduled departure times from Maputo International Airport are: 11h30 or 15h30. Scheduled departure times for the return transfer from White Pearl Resorts are 11h00 and 13h30. Unscheduled transfers can be arranged at an additional fee. The luggage allowance is 20kg (soft bag) per person for the Maputo road transfer.

HELICOPTER TRANSFERS

White Pearl Resorts offers a helicopter sky transfer service from Maputo International Airport. Fly over remote dune bush and beautiful coastal scenery, as well as the Maputo Special Reserve, on your journey to the Resort. The journey between the airport and White Pearl Resorts takes approximately 30 minutes.

FLIGHT TIMES

Maputo International Airport to
White Pearl Resorts:

Depart: 11:30

White Pearl Resorts to Maputo
International Airport:

Depart: 12:10

LUGGAGE

The allowance for luggage is a maximum of **12kg** (soft bag) per person. Storage facilities for excess luggage are available at no additional cost.

Excess luggage (max 20kg per person) will be transported to the resort by road on a scheduled transfer and a surcharge applies.

MEETING POINT

A White Pearl representative will meet and assist guests upon arrival of their flights at Maputo International Airport. For guests already in Maputo, a White Pearl representative will meet guests at The White Pearl Kiosk. The Kiosk is situated in the Domestic Departures area at the Airport.

FIXED-WING TRANSFER

White Pearl Resorts also offers a Fixed-Wing transfer service from Kruger Mpumalanga International Airport to Maputo International Airport. The flight time between Kruger Mpumalanga International Airport and Maputo International Airport is approximately 45 minutes. This option is followed by a road transfer from Maputo International Airport to White Pearl Resort, which is approximately 90 minutes.

FLIGHT TIME

Kruger Mpumalanga International
Airport to Maputo International
Airport:

Depart: 12:30

LUGGAGE

The allowance for luggage is a
maximum of 20kg (soft bag) per
person.

Excess luggage for guests
departing by Helicopter transfer will
be transported on a scheduled
road transfer at a surcharge.

All transfers need to be booked and paid a minimum of 7 days prior to arrival.

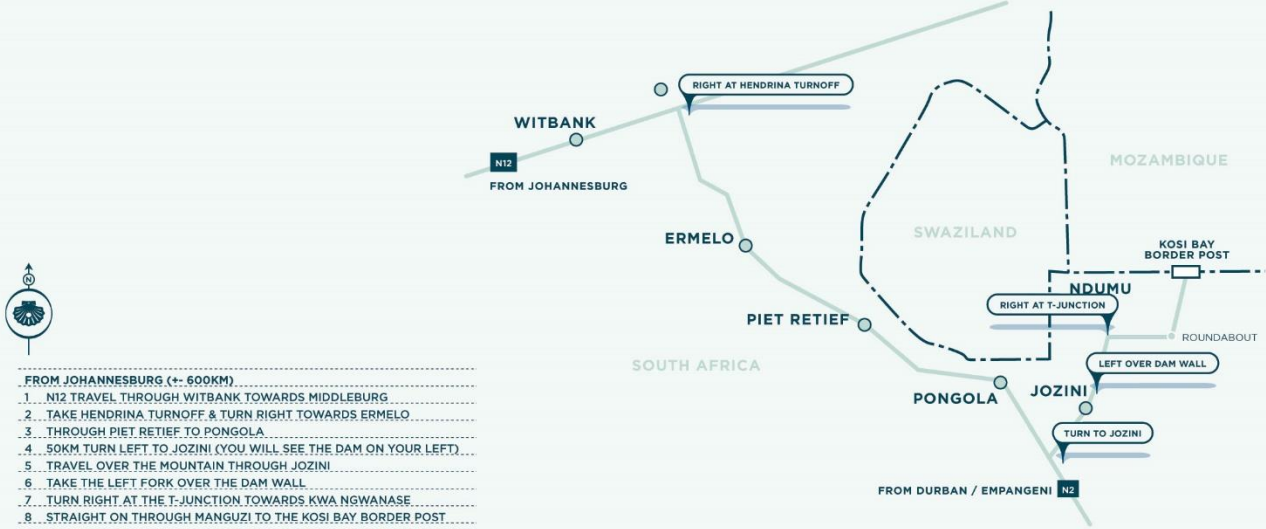
Transfer schedules and travelling times are subject to weather and road conditions. We recommend that guests take out travel insurance, as White Pearl Resorts will not be held liable for inclement weather conditions.

DOCUMENTS REQUIRED:

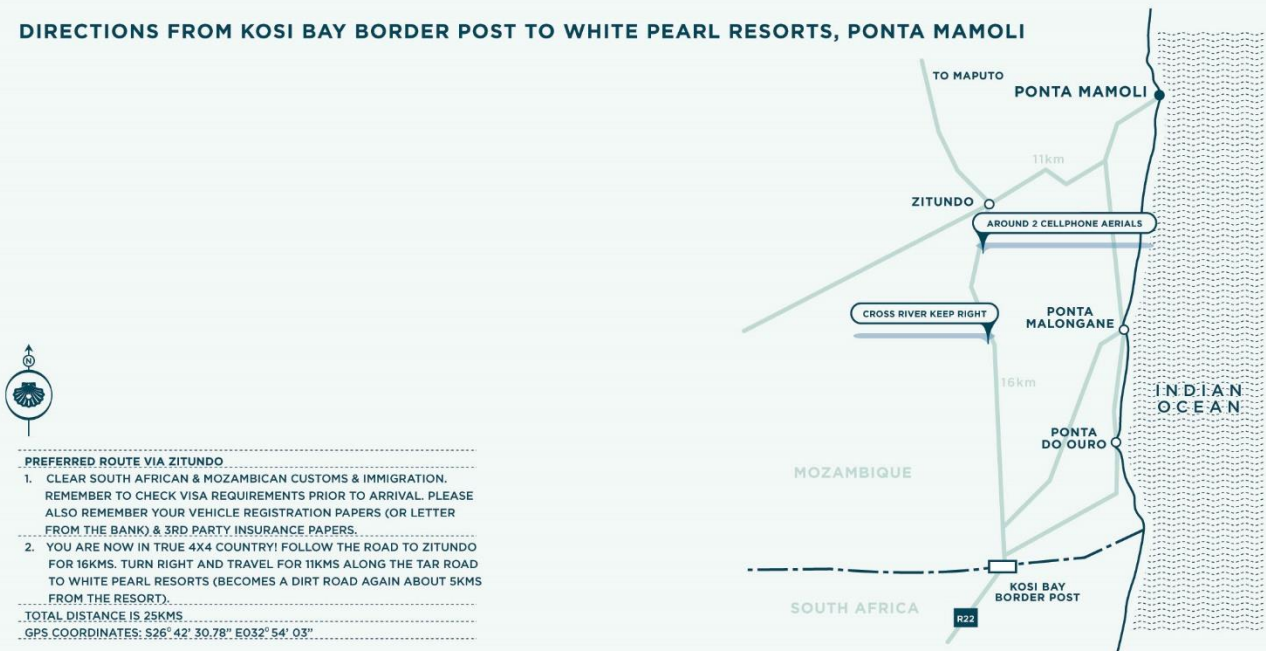
When taking your vehicle across the border, you are required to have the necessary documentation with you. [Click here](#) for more information.

If you are travelling with children and crossing the border, immigration regulations require necessary documentation to be presented. [Click here](#) for more information.

DIRECTIONS FROM JOHANNESBURG TO KOSI BAY BORDER



DIRECTIONS FROM KOSI BAY BORDER POST TO WHITE PEARL RESORTS, PONTA MAMOLI



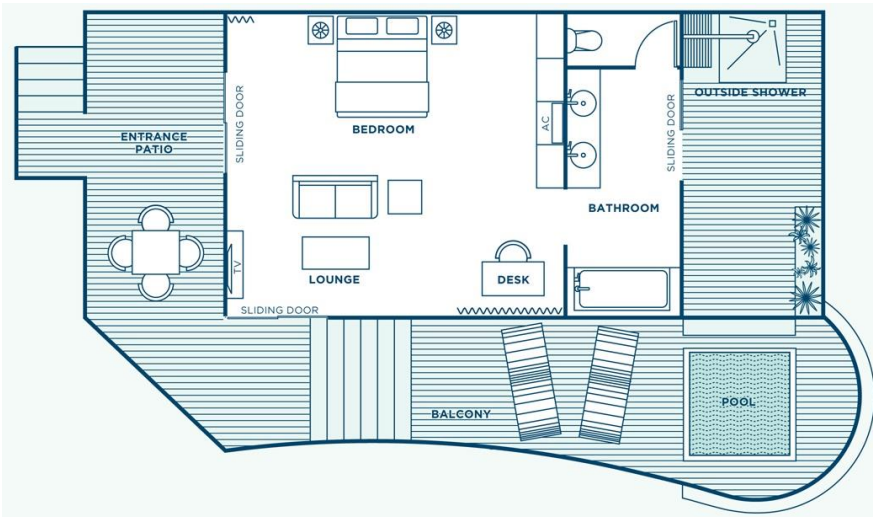
ACCOMMODATION

6 BEACH POOL SUITES

Stay in one of 6 superior Beach Pool Suites. These units are located on the beachfront with direct access to the beach. All suites are ocean-facing with a spectacular view, private plunge pool, private deck and outdoor shower.

Features:

- Located on the beachfront
- Direct beach access
- Spectacular views
- Private plunge pool
- Covered deck
- Outdoor shower
- Elegant living area
- Satellite TV
- Mini-bar and tea/coffee tray
- Stylish bedroom with king-size bed
- Luxurious en-suite bathroom
- Spacious – 54 sqm
- Air conditioning
- Unlimited Wi-Fi connectivity

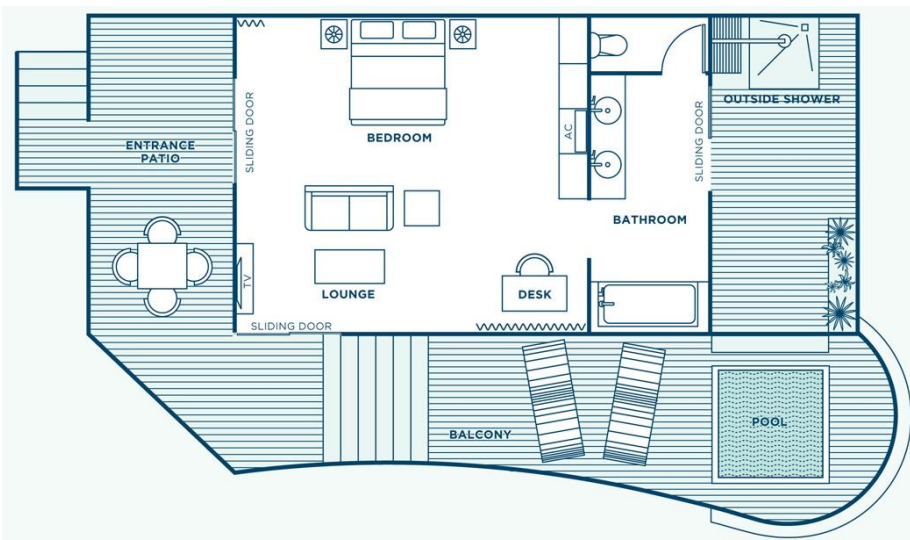


16 POOL SUITES

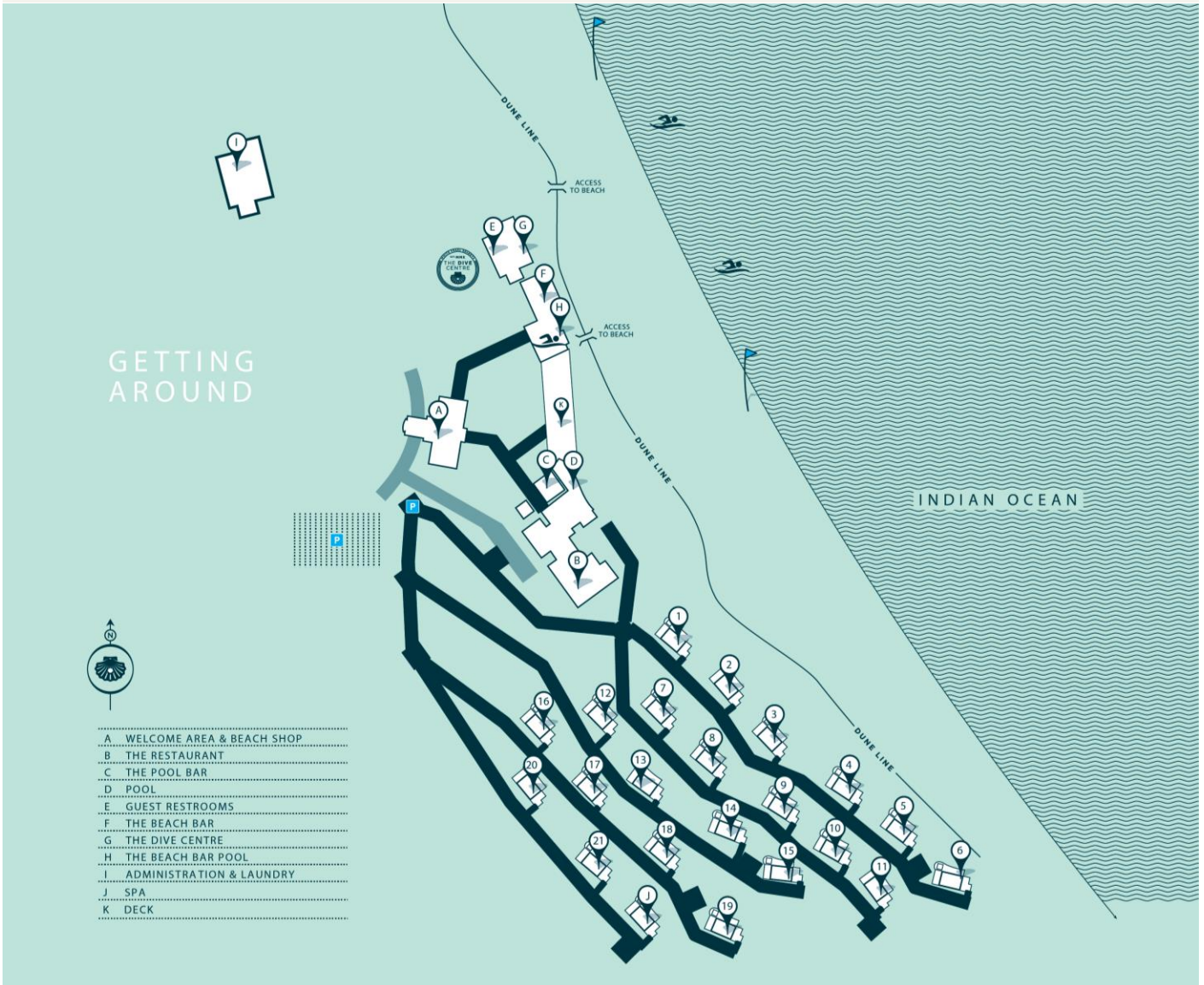
Stay in one of 16 exquisite Pool Suites. All suites are ocean-facing with panoramic ocean views, private plunge pool, private deck and outdoor shower.

Features:

- Ocean facing
- Spectacular views
- Private plunge pool
- Covered deck
- Outdoor shower
- Elegant living area
- Satellite TV
- Mini-bar and tea/coffee tray
- Stylish bedroom with king-size bed
- Luxurious en-suite bathroom
- Spacious – 54 sqm
- Air conditioning
- Unlimited Wi-Fi connectivity



RESORT LAYOUT



GUEST AREAS

All of the guest areas have been designed for comfort, relaxation and beachside romance – making the most of the magnificent views. There are a number of interesting spaces to suit your mood.

RECEPTION

This is our favourite place - it is where we welcome our guests to our beautiful resort. Check-in to the experience of a lifetime. Our friendly staff will take your luggage and whisk you away to your exquisite private suite in a White Pearl golf cart.

THE BEACH BAR

The Ibiza-styled glamorous Beach Bar, set against a backdrop of endless ocean, is at the heart of this unmatched beach experience. There's little better than enjoying rustic tapas served with ice cold beverages. With the breathtaking view of clear blue water and a dazzling white beach you can idle away the time in beachside comfort.



THE POOL DECK

Stretch out on one of the beautiful oversized day beds or comfortable loungers while you indulge in a refreshing cocktail with views over the great expanse of the ocean and white sands.

THE POOL BAR

A sparkling infinity pool invites you to cool off and enjoy the spectacular views while indulging in a variety of signature cocktails. Watch the sun set while sharing your experiences of the day in our elegant beach boma over the beat of Mozambican drums.

THE JELLY FISH RESTAURANT

The elegant beach chic of our restaurant is the perfect setting to enjoy mezze platters laden with fruit, freshly baked pastries and delicious treats for breakfast. After the morning's activities, relax with a fresh salad or light lunch and refreshing drink. By night, enjoy a romantic, candlelit dinner and celebrate the finest seafood Mozambique has to offer. The experience is complete with the warmest of Mozambican hospitality. A dress code applies to dinners at the Restaurant – see the 'Resort Policies & Dress Code' section for further information.

READING ROOM & LOUNGE

Slow down to a leisurely pace and fall into a comfortable chair in our stylish reading room, the perfect spot for perusing coffee table books in quiet surroundings. Explore the Mozambican sky with the White Pearl telescope and discover the beauty and magic the night has to offer. Book our private lounge for meetings or private group dining.

CONFERENCING FACILITY

Overlooking the ocean, our fully equipped 12 seater boardroom-styled conference facility offers delegates and executives the ultimate tranquility and atmosphere to be inspired and focused. Facilities such as the overhead data projector, screen, flip chart and stationery are available, as well as unlimited Wi-Fi connectivity throughout the resort. To keep the energy levels up - coffee, tea and delectable biscuits are served throughout. A variety of locations can also be used for breakaway sessions around the resort.

WINE CELLAR

Enjoy an extensive selection of some of Southern Africa's finest wines, including some of the great perennial classics, chosen to best reflect the fine cuisine prepared by our Executive Chef. Offerings range from Imported French champagnes to delectable and quaffable beach wines. Enjoy delightful beach picnics at lunch time and exquisite fine dining in the evening with deliciously appropriate wine at your service for every occasion.

ACTIVITIES

We have a broad offering of activities to suit every kind of traveller – encompassing themes of nature and adventure, relaxation and wellbeing or culture and philanthropy. Kindly note that included activities vary according to your particular package. Below is an extensive list of all activities available at the resort; for more details on what each activity entails, please refer to our Activities Fact Sheet.

NATURE & ADVENTURE

Ocean Safaris, See the Turtles (seasonal), Guided Walk, Fat Bikes, Surfing, Kayaking, Stand-Up Paddling, Snorkelling off the Beach, Beach Sports, Diving Packages, Bush or Beach Horse Riding, Maputo Special Reserve.



RELAXATION & WELLBEING

30-Minute Back, Neck & Shoulder Massage, Beach Picnic for Two, Stargazing/Moon Gazing, Shoreline Fishing, Beach Bootcamp, Spa Treatments

CULTURE & PHILANTHROPY

Growing Pearls, SOS (Save our Seas) Walk, Local Drumming Performance

SPA TREATMENTS

Surrounded by soothing sounds and calming scents, experience a variety of spa treatments. Lose yourself in the breathtaking views of the lake and ocean as you experience utter revitalisation of your body and soul. Enhance your glowing tan with skin pampering treatments and show off your beautiful and elegant, pampered feet in pretty beach sandals. Couple's treatments bring harmonious indulgences. If whizzing yourself off to the undeniably beautiful spa seems like a rude distraction from your world class suite, the therapists can come to you instead!

TRAVEL REQUIREMENTS

It is the responsibility of the guest, not the Resort, to ensure that all international travel requirements are met upon travelling to the resort.

Passports, visas and documentation should be available for presentation throughout travel, arrival and departure. Please ensure that you have your passports and travel documents stamped at the border control and returned directly to you.

Border visas will only be issued to people travelling for purposes of tourism and may be obtainable at all Mozambican borders. It is essential that guests have on hand proof that they are tourists with proof of accommodation and departure ticket. The Resort will provide guests with proof of accommodation for this purpose.

Visa rules are subject to change as per government discretion and we recommend that guests confirm with their local embassy on when and where to obtain visas prior to arrival.

DOCUMENTS REQUIRED:

When taking your vehicle across the border, you are required to have the necessary documentation with you. [Click here](#) for more information.

If you are travelling with children and crossing the border, immigration regulations require necessary documentation to be presented. [Click here](#) for more information.

MALARIA

Due to its more southern location, White Pearl Resorts, Ponta Mamoli is situated in a low risk malaria area. Nevertheless, please consult with your medical practitioner for any advice on any other precautions.

WEATHER

Mozambique enjoys a tropical climate, with plenty of sunshine throughout the year. The average temperature is around 28°C and the weather along the coast is sunny and warm, even in mid-Winter. The country has two seasons; a wet season (from October to March) and a dry season (from April to September) – with very little variation in temperatures between the two.

RESORT POLICIES & DRESS CODE

Appropriate attire is required for evening dinners. Shorts, flip flops or swimwear are not permitted in the dining areas in the evenings. To maintain the privacy of our guests, we do not allow drones to be used on the property. No alcohol may be brought onto the premises.

ADAPTORS

All electrical outlets are 220v AC. International adaptors are available upon request.

CHECK IN/CHECK OUT

Check in time: 14:00 - Check out time: 10:00

CHILD POLICY

A maximum of 2 children under the age of 16 years can be accommodated with parents in the same suite. A separate bed will be provided. A camp cot is available on request.

If a second room is booked, 1 child pays the adult per person sharing rate and 1 child pays the age-applicable rate.

Families with children under 16 years must adhere to terms and conditions of the child policy.

The family dining area must be used if children are dining with parents. Should parents opt to dine together in the restaurant, a childminder needs to be arranged at an additional charge, as children under the age of 10 years are not permitted in the main restaurant in the evenings.

PAYMENTS

We accept cash payments and major credit cards for booking accommodation. Visa and MasterCard are generally accepted at the Resort. **Diners Club cards are not accepted.**

White Pearl Resorts, Mozambique

Email: reservations@whitepearlresorts.com

Tel: +27 11 026 2674

For special offers, terms and conditions, visit our website:

www.whitepearlresorts.com